

DigiTrak LWD (Log-While-Drilling) for Windows® software on your computer allows you to import Falcon F5+ locator DataLog® data to display, annotate, and create drill logs and graphs.

## Install Software

LWD software is compatible with Windows 10 and later.

1. On your Windows computer, go to the [Microsoft Store](#). Search for "DigiTrak LWD" and click **Install**. The LWD App shortcut icon appears.
2. Click the LWD shortcut to open.





## Authorize Location Services for Windows

To transfer data from the locator to LWD, you must authorize location services for Windows. An administrative login may be required.

1. Go to **Settings**, click **Privacy**, and then click **Location**.
2. Turn on **Allow Apps to Access Your Location**, or equivalent.  
For more information, see the Windows Help on your computer.

## Transfer Data to Computer

1. From the Main menu, select **Drill DataLog** .
2. Select **Upload Job** .
3. Select a job from the list.
4. In the LWD app on your computer, click the + in the top right corner, and then select the type of locator that the data is transferring from. The DataLog data will be transferred into LWD. The locator will beep when the transfer is complete.
5. Enter or edit the job information, and then click **OK**. The fields and charts will be updated with data. For a more detailed report, add utility flags and chart annotations.

## Open an LWD file on your computer

LWD must be installed.

1. Click + and select **File** from the Import DataLog dialog.
2. Locate the file you want to open.
3. Open the job file.


When the job opens, LWD will display detailed information about the job and bore data, including a profile view of the bore and pressure data.

The map view shows iGPS® data (when present) for the entry and exit points

added by a user. If a white line job was created, the job is transferred to the map window and displayed there. For more information, see the LWD manual in the DCI DigiGuide™ app.

## Add utility flags

Utilities that were crossed during the pilot bore can be added from the Chart view.


1. On the Chart view, click **Edit** .
2. Select the **Utility Type**.
3. Enter the surface **Distance**, **Depth**, and any **Comments**.
4. Click **Save**.

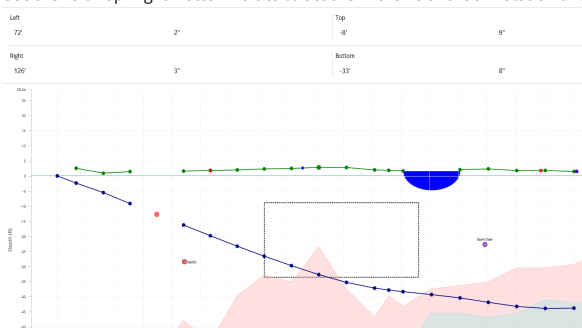
To edit or delete an existing utility in the Chart view, click on it to open the Utility dialog.

Utility	
Utility Type Other	
Surface Distance 0'	
Depth 0'	
Comment	
Text Position Top	
Cancel	Save

## Add chart annotations

Chart annotations use shapes and captions to identify features, such as roadways and creeks. Annotations appear on the Chart view and on the printed drill profile.

1. On the Chart view, click **Edit** .
2. Click **Add Annotation**.
3. A rectangle with dashed lines is created. Click on the rectangle and drag it to the desired position.
4. Use the Left/Top/Right/Bottom values to set the final size of the annotation and click **Continue**.




5. Select the shape you want to use. Use "basin" to designate rivers or other bodies of water.

6. Click **Save**.

## Edit rod data

In the Data view, you can edit rod data, such as depth and pitch, or add details about an individual rod.

1. In the Data view, select the rod.
2. Click the line with the data to edit.
3. Edit data in any field with a single bracket > to the right. Edited data displays the Edit icon  and the rod number and data turn purple.

< DataLogs

Sample DataLog 6

0	<div><div><div>↖</div><div>-46.0%</div></div><div><div>↓</div><div></div></div><div><div>→</div><div>0' 0"</div></div></div>	<div>Bore Path Info</div>
1	<div><div><div>↖</div><div>-26.5%</div></div><div><div>↓</div><div>4' 11"</div></div><div><div>→</div><div>6' 7"</div></div></div>	<div>Rod Number</div>
2	<div><div><div>↖</div><div>-40.0%</div></div><div><div>↓</div><div>6' 5"</div></div><div><div>→</div><div>17' 0"</div></div></div>	<div>7</div>
3	<div><div><div>↖</div><div>-38.0%</div></div><div><div>↓</div><div>10' 7"</div></div><div><div>→</div><div>26' 4"</div></div></div>	<div>Type</div>
4	<div><div><div>↖</div><div></div></div><div><div>↓</div><div></div></div><div><div>→</div><div>35' 8"</div></div></div>	<div>Front Locate Point</div>
5	<div><div><div>↖</div><div>-38.0%</div></div><div><div>↓</div><div>17' 10"</div></div><div><div>→</div><div>45' 0"</div></div></div>	<div>Pitch</div>
6	<div><div><div>↖</div><div>-38.0%</div></div><div><div>↓</div><div>21' 7"</div></div><div><div>→</div><div>54' 5"</div></div></div>	<div>-36.0%</div>
7	<div><div><div>↖</div><div>-36.0%</div></div><div><div>↓</div><div>25' 3"</div></div><div><div>→</div><div>63' 9"</div></div></div>	<div>Depth</div>
8	<div><div><div>↖</div><div>-34.0%</div></div><div><div>↓</div><div>28' 11"</div></div><div><div>→</div><div>73' 2"</div></div></div>	<div>25' 3"</div>
9	<div><div><div>↖</div><div>-32.0%</div></div><div><div>↓</div><div>32' 2"</div></div><div><div>→</div><div>82' 8"</div></div></div>	<div>Terrain Height</div>
10	<div><div><div>↖</div><div>-30.0%</div></div><div><div>↓</div><div>35' 3"</div></div><div><div>→</div><div>92' 3"</div></div></div>	<div>1' 8"</div>
11	<div><div><div>↖</div><div>-23.5%</div></div><div><div>↓</div><div>38' 1"</div></div><div><div>→</div><div>101' 11"</div></div></div>	<div>Relative Depth</div>
12	<div><div><div>↖</div><div>-15.0%</div></div><div><div>↓</div><div></div></div><div><div>→</div><div></div></div></div>	<div>-23' 7"</div>

Info

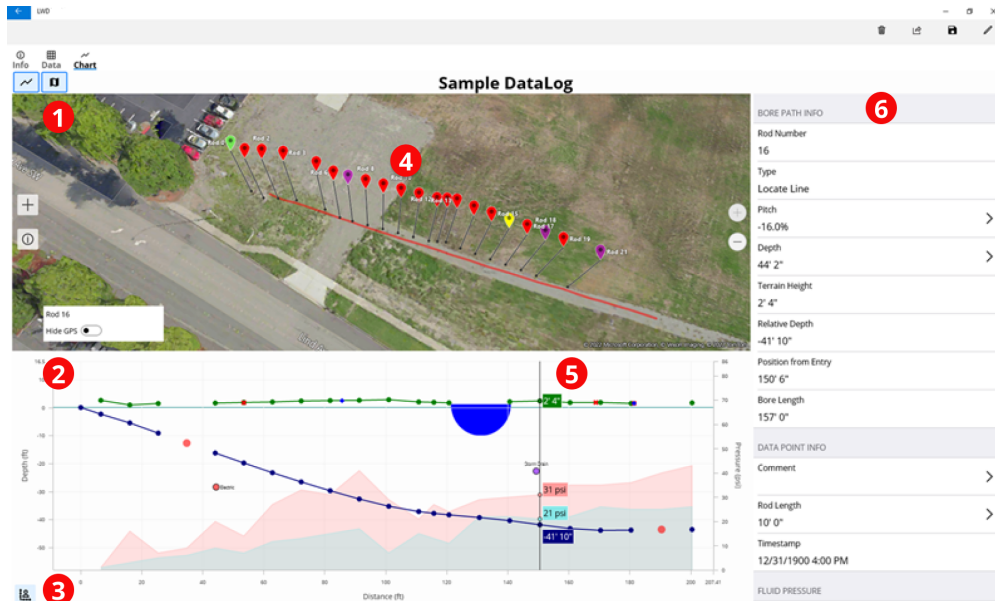
Data

Chart

4. Click **Save**.

# LWD Typical Screen

- 4 -



1. Map View
2. Chart View

3. Chart Scaling Control
4. Data from iGPS

5. Track Ball
6. Rod Data

For detailed information, scan the QR code to install the **DCI DigiGuide App** from your smart device's App store. If you have questions, contact your regional DCI office or Customer Service at 1.425.251.0559 or 1.800.288.3610 US/CA.

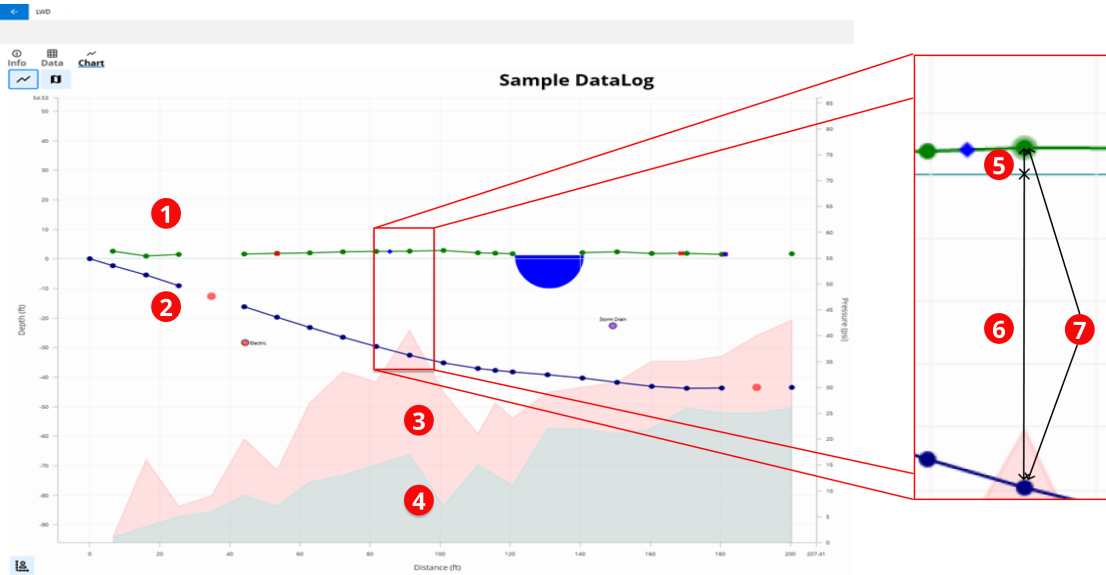


Watch our DigiTrak training videos at  
[www.YouTube.com/DCIKent](http://www.YouTube.com/DCIKent)

DataLog, DCI logo, Digital Control, DigiTrak, F5, and iGPS are registered trademarks and DigiGuide, Falcon Noise Bar log and LWD are common law trademarks of Digital Control Incorporated. Windows is a registered trademark of Microsoft. Additional trademark registrations are pending. U.S. and foreign patents apply to the product covered by this guide. For details, please visit [digital-control.com/trademarks](http://digital-control.com/trademarks) and [digital-control.com/patents](http://digital-control.com/patents).



Printed:  
8/23/2024



1. Terrain (green line)
2. Drill Path (blue line)

3. Max Fluid Pressure (red area)
4. Avg Fluid Pressure (gray area)

5. Relative Elevation
6. Relative Depth
7. Depth (5+6)

## Sample DataLog

0	1	↘ -46.0%	↓	→ 0' 0"	BORE PATH INFO	
1		↘ -26.5%	↓ 4' 11"	→ 6' 7"	Rod Number	
2		↘ -40.0%	↓ 6' 5"	→ 16' 1"	Type	
3		↘ -38.0%	↓ 10' 7"	→ 25' 5"	Front Locate Point	4
4	2	↘	↓	→ 34' 9"	Pitch	>
5		↘ -38.0%	↓ 17' 10"	→ 44' 1"	Depth	>
6		↘ -38.0%	↓ 21' 7"	→ 53' 5"	Terrain Height	
7		↘ -36.0%	↓ 25' 3"	→ 62' 10"	2' 0"	
8		↘ -34.0%	↓ 28' 11"	→ 72' 3"	Relative Depth	
9		↘ -32.0%	↓ 32' 2"	→ 81' 9"	-23' 3"	
10		↘ -30.0%	↓ 35' 6"	→ 91' 4"	Position from Entry	
11		↘ -23.5%	↓ 38' 1"	→ 101' 0"	62' 10"	
12		↘ -15.0%	↓ 39' 2"	→ 110' 10"	Bore Length	5
					67' 0"	
					DATA POINT INFO	
					Comment	>
					Rod Length	>
					10' 0"	>

1. Pitch Only
2. Blank Rod

3. Edited Data
4. Reading Type

5. Bore Length