

## Introduction

The DataLog system on an F5 or Falcon F5+ locator records depth, pitch, and pressure data. Use LWD software on your computer to import this data to display, annotate, and create drill logs and graphs.

## Install Software

DigiTrak Log-While-Drilling (LWD) Mobile for Windows software is compatible with Windows 10 and later.

1. On your Windows computer, go to the [Microsoft Store](#). Search for "DCI LWD Mobile" and click **Install**. The LWD Mobile App shortcut icon appears.
2. Click the LWD shortcut to open.





## Authorize Location Services for Windows

To transfer data from the locator to LWD Mobile, you must authorize location services for Windows. An administrative login may be required.

1. Go to **Settings**, click **Privacy**, and then click **Location**.
2. Turn on **Allow Apps to Access Your Location**, or equivalent. For more information, see the Windows Help on your computer.

## Transfer Data to Computer

1. From the Main menu, select **Drill DataLog** .
2. Select **Upload Job** .
3. Select a job from the list.
4. In the LWD Mobile app on your computer, click the **+** in the top right corner, and then select the type of locator that the data is transferring from. The DataLog data will be transferred into LWD Mobile. The locator will beep when the transfer is complete.
5. Enter or edit the job information, and then click **OK**. The fields and charts will be updated with data. For a more detailed report, add utility flags and chart annotations.

## Open an LWD file on your computer

LWD Mobile must be installed.


1. Click **+** and select **File** from the Import DataLog dialog.
2. Locate the file you want to open.
3. Open the job file.

When the job opens, LWD Mobile will display detailed information about the job and bore data, including a profile view of the bore and pressure data.

The map view shows iGPS data (when present) for the entry and exit points added by a user. If a white line job was created, the job is transferred to the map window and displayed there. For more information, see the *LWD Mobile* chapter of the DigiGuide Falcon F5+ manual.

## Add utility flags

Utilities that were crossed during the pilot bore can be added from the Chart view.


1. On the Chart view, click **Edit** .
2. Select the **Utility Type**.
3. Enter the surface **Distance**, **Depth**, and any **Comments**.
4. Click **Save**.

To edit or delete an existing utility in the Chart view, click on it to open the Utility dialog.

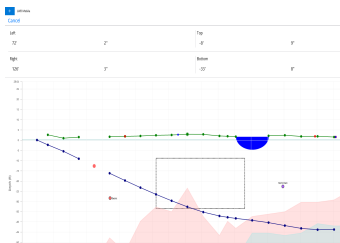
Utility	
Utility Type	Other <input type="text"/>
Surface Distance	0' 0"
Depth	0' 0"
Comment	<input type="text"/>
Text Position	Top <input type="text"/>
<input type="button" value="Cancel"/> <input type="button" value="Save"/>	

## Add chart annotations

Chart annotations use shapes and captions to identify features, such as roadways and creeks. Annotations appear on the Chart view and on the printed drill profile.


1. On the Chart view, click **Edit** .
2. Click **Add Annotation**.


- A rectangle with dashed lines is created. Click on the rectangle and drag it to the desired position.
- Use the Left/Top/Right/Bottom values to set the final size of the annotation and click **Continue**.
- Select the shape you want to use. Use "basin" to designate rivers or other bodies of water.
- Click **Save**.



## Edit rod data

In the Data view, you can edit rod data, such as depth and pitch, or add details about an individual rod.

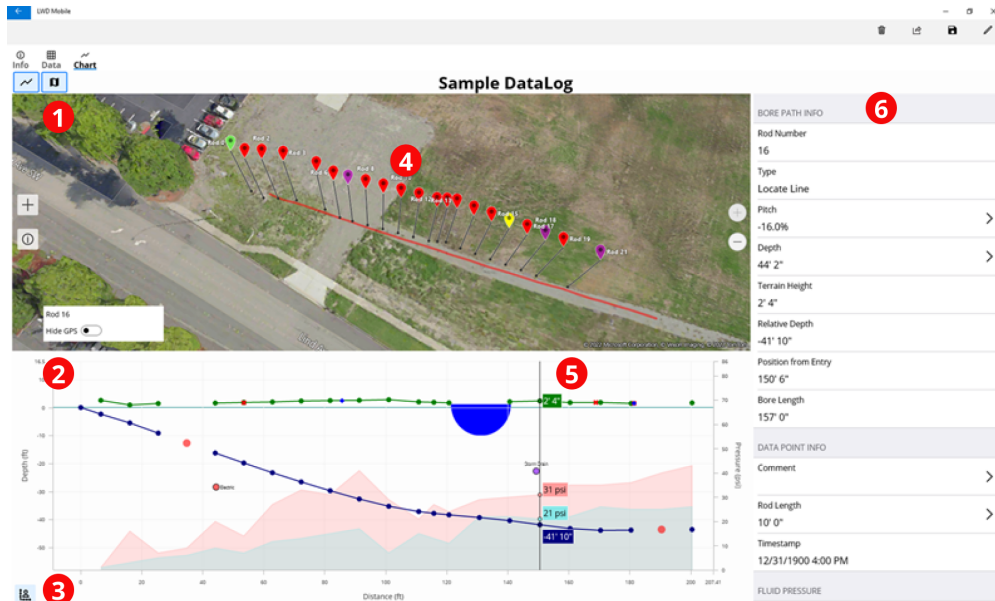
- In the Data view, select the rod.
- Click the line with the data to edit.
- Edit data in any field with a single bracket > to the right. Edited data displays the Edit icon  and the rod number and data turn purple.
- Click **Save**.

ROD	DEPTH	PITCH	STATUS
0	-46.0%	→ 0' 0"	
1	-28.0%	→ 4' 7"	
2	-40.0%	→ 17' 0"	
3	-57.7%	→ 36' 4"	
4	-57.7%	→ 35' 8"	
5	-38.0%	→ 45' 0"	
6	-50.0%	→ 64' 8"	
7	-30.0%	→ 63' 9"	
8	-30.0%	→ 72' 2"	
9	-32.0%	→ 82' 8"	
10	-50.0%	→ 92' 2"	
11	-33.6%	→ 102' 9"	
12	-50.0%	→ 102' 9"	

Sample DataLog 6	
Blade Path Info	
Rod Number	7
Type	Point Locate Point
Pitch	-36.0%
Depth	23' 3"
Turnout Height	7' 8"
Relative Depth	-23' 3"
Position from Entry	63' 9"
Blade Length	68' 0"
Data Point Info	

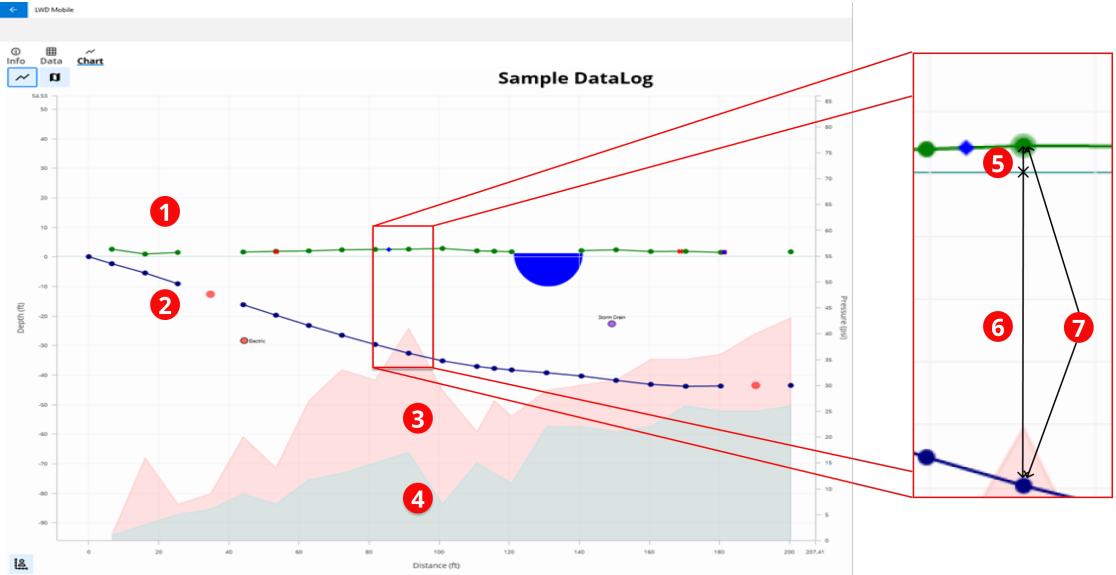
# LWD Mobile for Windows Typical Screen



- 1. Map View
- 2. Chart View

- 3. Chart Scaling Control
- 4. Data from iGPS

- 5. Track Ball
- 6. Rod Data



- 1. Terrain (green line)
- 2. Drill Path (blue line)

- 3. Max Fluid Pressure (red area)
- 4. Avg Fluid Pressure (gray area)

- 5. Relative Elevation
- 6. Relative Depth
- 7. Depth (5+6)

## Sample DataLog

0	1	↙ -46.0%	↓	→ 0' 0"
1		↙ -26.5%	↓ 4' 11"	→ 6' 7"
2		↙ -40.0%	↓ 6' 5"	→ 16' 1"
3		↙ -38.0%	↓ 10' 7"	→ 25' 5"
4	2	↙	↓	→ 34' 9"
5		↙ -38.0%	↓ 17' 10"	→ 44' 1"
6		↙ -38.0%	↓ 21' 7"	→ 53' 5"
7		↙ -36.0%	↓ 25' 3"	→ 62' 10"
8		↙ -34.0%	↓ 28' 11"	→ 72' 3"
9		↙ -32.0%	↓ 32' 2"	→ 81' 9"
10		↙ -30.0%	↓ 35' 6"	→ 91' 4"
11		↙ -23.5%	↓ 38' 1"	→ 101' 0"
12		↙ -15.0%	↓ 39' 2"	→ 110' 10"

BORE PATH INFO	
Rod Number	7
Type	4
Front Locate Point	
Pitch	-36.0% >
Depth	25' 3" >
Terrain Height	2' 0"
Relative Depth	-23' 3"
Position from Entry	62' 10"
Bore Length	67' 0" 5
DATA POINT INFO	
Comment	>
Rod Length	10' 0" >

1. Pitch Only
2. Blank Rod

3. Edited Data
4. Reading Type

5. Bore Length

For detailed information, install the **DCI DigiGuide App** from your smart device's App store or download the Operator's Manuals from [digital-control.com](http://digital-control.com). Printed manuals are available upon request. If you have questions, contact your regional DCI office or Customer Service at 1.425.251.0559 or 1.800.288.3610 US/CA.

Watch our DigiTrak training videos at  
[www.YouTube.com/DCIKent](http://www.YouTube.com/DCIKent)

The DCI logo, DataLog, DigiTrak, DigiTrak Falcon, F5, and iGPS are registered trademarks and DCI, LWD, DigiGuide, and Falcon logo are common law trademarks of Digital Control Incorporated. Additional trademark registrations are pending.



Printed:  
7/13/2022